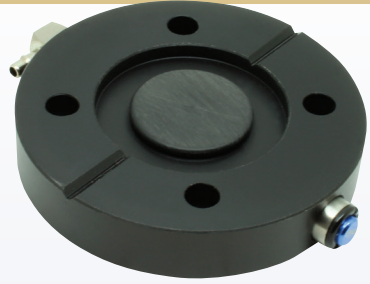


### Elevated Vacuum Valves • *In Line* (Distal to Socket)

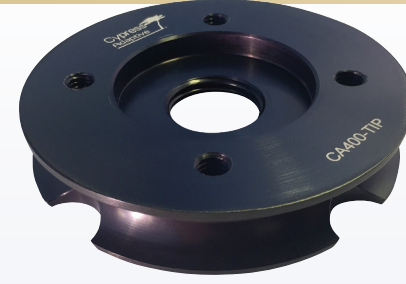


#### **Aria**® HV Plate Valve

Auto-Expulsion & Push Button Release with Attachment for Vacuum Systems

Part Nr: CA300-AHVP

Part Nr.: CA400-TIP-HVP  
(includes Part Nr. CA300-AHVP and Part Nr. CA400-TIP)



#### Cypress 4 Hole Tie-in-Plate

Use alone or with any Aria Thread in Valve Inserts or Aria Plate Valves

Part Nr.: CA400-TIP

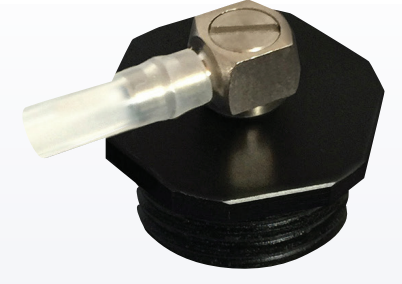


#### **Aria**® HV Valve Insert

Straight Barb

Part Nr.: CA400-HV (Insert and barb)

Part Nr.: CA400-TIP-HV  
(includes Part Nr. CA400-HV and Part Nr. CA400-TIP)

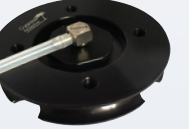


#### **Aria**® 90° HV Valve Insert

90° Barb

Part Nr.: CA400-HV9 (Insert and barb)

Part Nr.: CA400-TIP-HV9  
(includes Part Nr. CA400-HV9 and Part Nr. CA400-TIP)



### Elevated Vacuum Valves • *Socket Mounted*



#### **Aria**® Hybrid Valve

Reliable Valve for Elevated Vacuum

- Auto-expulsion function with a push button release
- Installs into ALL prosthetic socket materials
- Screw on cap design for added security and durability
- Threaded Housing included
- Built in barb attachment

Part Nr.: CA300-HYV

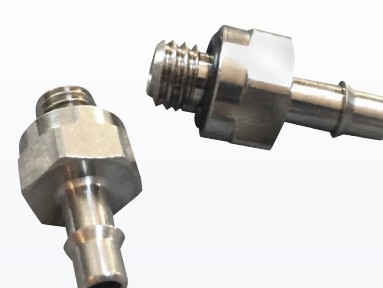


#### **Aria**® Aria Safety Barb

With Swivel Barb and internal check valve

Part Nr.: CA300-ASB (US)

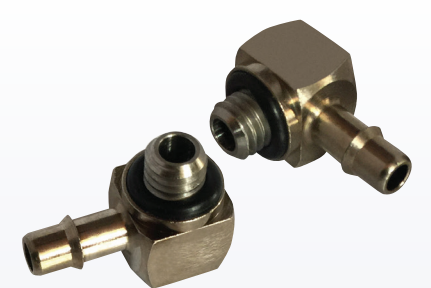
Part Nr.: CA300-ASBM (Metric)



#### Straight Stainless Barbs

Sold in pairs

Part Nr.: CA300-BST

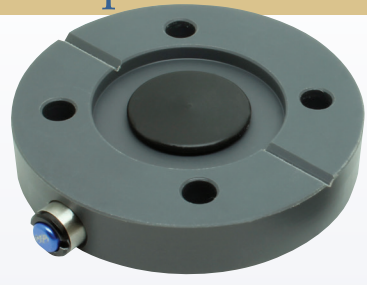


#### Stainless 90° Swivel Barbs

Sold in pairs

Part Nr.: CA300-B90

### Passive Expulsion Valves • *In Line* (Distal to Socket)

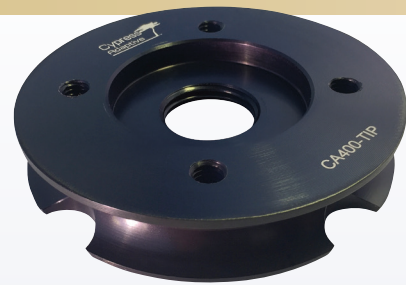


#### **Aria**® Plate Valve

Auto Expulsion with Push Button Release

Part Nr.: CA300-APV

Part Nr.: CA400-TIP-P  
(includes Part Nr. CA300-APV and Part Nr. CA400-TIP)



#### Cypress 4 Hole Tie-in-Plate

Use alone or with any Aria Thread in Valve Inserts or Aria Plate Valves

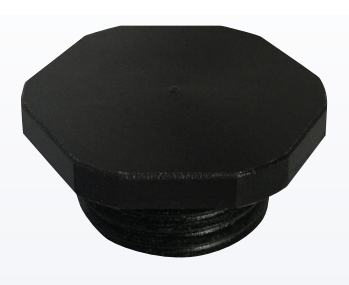
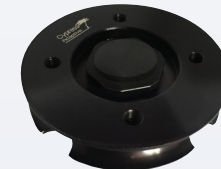
Part Nr.: CA400-TIP



#### **Aria**® Auto Expulsion Valve Insert

Part Nr.: CA400-V

Part Nr.: CA400-TIP-V  
(includes Part Nr. CA400-V and Part Nr. CA400-TIP)



#### **Aria**® Dummy Plug Insert

Part Nr.: CA400-P

Part Nr.: CA400-TIP-PG  
(includes Part Nr. CA400-P and Part Nr. CA400-TIP)



### Passive Expulsion Valves • *Socket Mounted*



#### **Aria**® AK Valve

Auto Expulsion AK Valve for all socket materials

- Push button auto-expulsion valve with removable plug
- Quick, efficient air expulsion

Part Nr.: CA100-AK

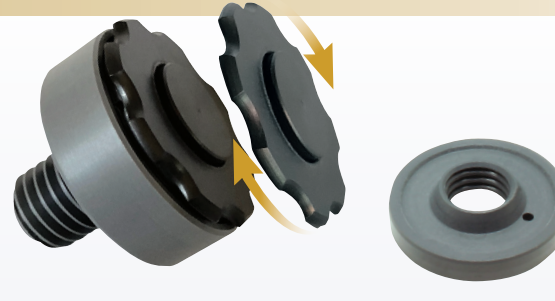


#### **Aria**® Valve Plus

Auto-Expulsion with Push-Button Release

- Auto-expulsion function with a push button release
- Installs into ALL prosthetic socket materials
- Screw on cap design for added security and durability
- Threaded Housing included

Part Nr.: CA200-AVP



#### **Aria**® Valve Plus Metric

Auto-Expulsion with Push-Button Release

- Auto-expulsion function with a push button release
- Installs into ALL prosthetic socket materials
- Screw on cap design for added security and durability
- Threaded Housing included

Part Nr.: CA200-AVPM

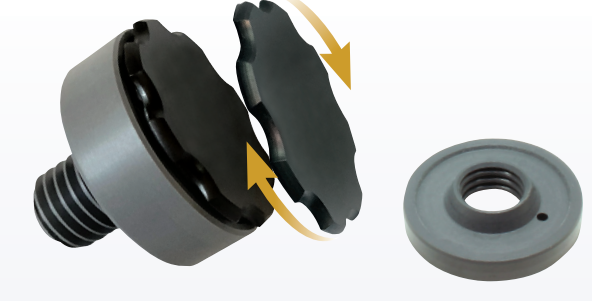


#### **Aria**® Valve

Auto-Expulsion (no button)

- Auto-expulsion function
- Installs into ALL prosthetic socket materials
- Screw on cap design for added security and durability
- Threaded Housing included

Part Nr.: CA200-AV



#### **Aria**® Valve Metric

Auto-Expulsion (no button)

- Auto-expulsion function
- Installs into ALL prosthetic socket materials
- Screw on cap design for added security and durability
- Threaded Housing included

Part Nr.: CA200-AVM

#### **Aria**® E Valve



One way auto-expulsion valve for use in lower limb prosthetic fittings.

Must be used with a sealing sleeve to ensure appropriate vacuum is created in the prosthetic socket.

Part Nr.: CA200-AE

### Cypress Adaptive Valve Tools

#### **Aria**® AK Valve Insert Key

For use with Aria AK Valve

Part Nr.: CA100-K



#### Cypress 4-Hole Plate Insert Tool

For use with all Cypress 4-Hole Plate Valve Inserts

Part Nr.: CA400-T



#### **Aria**® Valve Tool

For use with Aria Valve, Aria Valve Plus, Aria Hybrid Valve, Aria Plate Valve, Aria HV Plate Valve, and Aria Auto Expulsion Valve Insert

Part Nr.: CA300-AVT

